

COMMUNITY FEEDBACK



Steering Committee

The Tama Steering Committee has asked to Enhance Downtown Streetscapes, and try to bring both visitors and residents to downtown Toledo.



Mobility Challenged

Mobility-challenged people in Tama said that the streetscapes in downtown are difficult to traverse due to lack of curb cuts or ADA accessibility.

COMMUNITY ENGAGEMENT RESPONSE

"Heavy Traffic"



Steering Committee

The Harding Street and Highway 63 intersection were identified by community members as a danger to cross on the Tama Matrix due to vehicular speeding and lack of crosswalks, but also because the US Highway 63 trucking route travels through this crossing. The goal of both concepts is to slow down truck traffic without stopping it, addressing the concerns of Tama officials that IDOT would re-route this traffic through another town.

"Better Pedestrian Connections"



Active Adults



Parents



Kids

According to the Toledo Priorities, residents felt that better pedestrian connections was the third most important Transportation Enhancement Issue. Both concepts provide safe crossing across both streets by providing crosswalks, slowing traffic, and shortening the distance for pedestrians to cross. The proposed sidewalks along US Highway 63 and High Street will help to provide a more complete pedestrian network, satisfying the priorities identified by Toledo community members including Better Pedestrian Connections and Better Downtown Streetscapes.

"More Accessibility for Seniors"



Older Adults



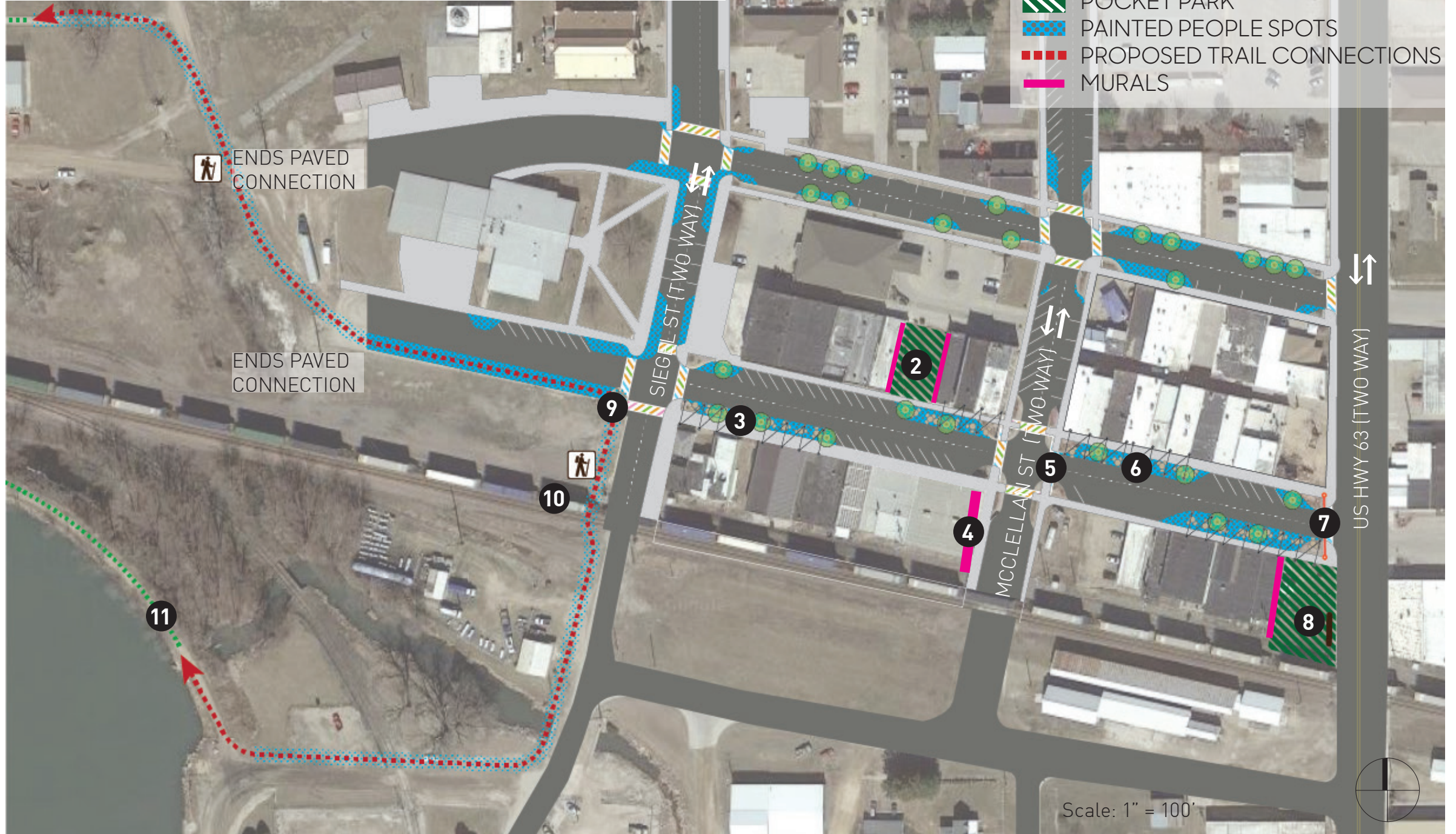
Mobility Challenged

The Toledo Priorities also identified lack of access for seniors and the mobility challenged as a Transportation Enhancement Issue, and both concepts for Downtown Toledo address this issue by providing ADA curb ramps with detectable warning strips at the end of all proposed crosswalks. Yield and stop signs are also proposed to slow incoming traffic and make drivers more aware of potential pedestrian presence, creating a safer crossing environment.

Tama

Downtown

CONCEPT ONE - Tactical Urbanism Approach



Existing Tama Rec Trail

Existing Pocket Park

"People Spots" - replacement of parking spaces with outdoor dining, parklets, play pockets, dog parks, trees in raised planters, and other pedestrian-focused amenities that activate and enhance the public realm.

Mural Opportunities

Enhanced Crosswalk - painted crosswalk with creative design to emphasize pedestrian connection while creating placemaking and branding opportunities.

Festoon Lights - overhead lights that highlight outdoor seating opportunities.

7 Downtown Tama Entry Gateway - vertical element that emphasizes the entrance to downtown and creates a sense of arrival.

8 Downtown Tama Gateway Park - new signage and enhance the open space near the Sugar Shack and US Highway 63.

9 Proposed Trail Connection - signage, wayfinding, pavement markings that emphasize both the visual and physical pedestrian connections at south side of parking lot.

10 Signed Railroad Crossing and Yield Signage for enhanced pedestrian connection

11 Existing Cherry Lake Trail



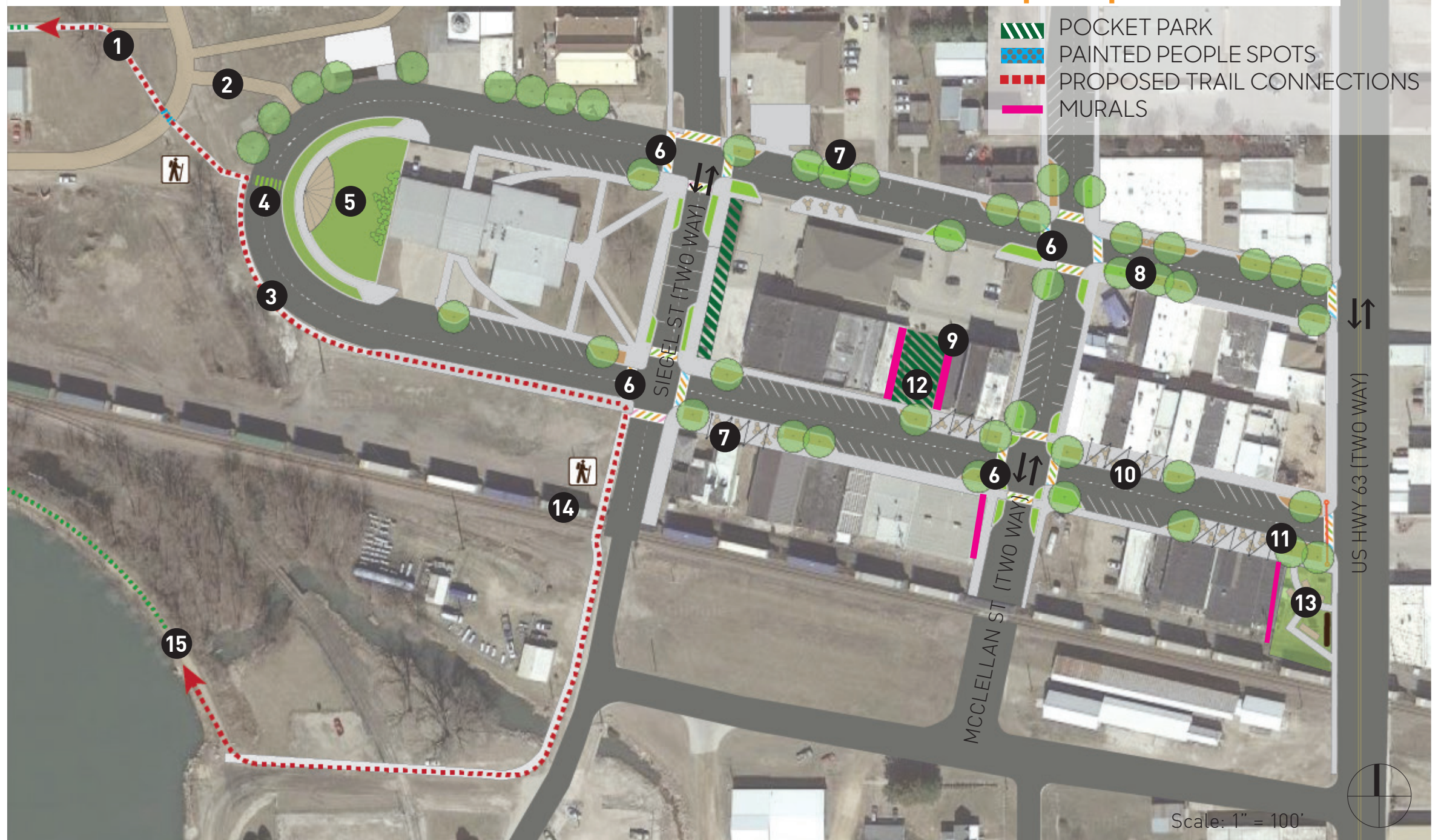
site design group

LA: Cassandra Rice, PLA, ASLA, Hana Ishikawa, AIA

Landscape Designer: Richard Meagher

Intern: Paul Hsu

CONCEPT TWO - Enhanced Connections & Permanent Streetscape Improvements



LEGEND:

- 1** Existing Tama Rec Trail
- 2** Roadway Improvements - Consolidate back-of-house access roads and connect to the Civic Drive once. Provide a clear and dedicated trail connection through access roads.
- 3** New sidewalk - Connection to Cherry Lake Trail along south side of parking lot with shade trees and enhanced landscape
- 4** Crosswalk - Enhanced pedestrian crosswalk connection to City Hall
- 5** Enhanced Civic Plaza / Trailhead
- 6** Enhanced Crosswalks
- 7** Curb Extension- Permanent bump-out with pavers for outdoor dining spaces, seating, public art, and other public realm improvements
- 8** Enhanced Street Trees
- 9** Mural Opportunities
- 10** Festoon Lights
- 11** Downtown Tama Entry Gate
- 12** Existing Pocket Park
- 13** Gateway Park and New City Sign
- 14** Signed Railroad Crossing and Yield Signage for enhanced pedestrian connection
- 15** Existing Cherry Lake Trail

