

COMMUNITY FEEDBACK



The Tama Steering Committee has asked to prioritize safer connections for pedestrians and bikers walking either along or across US Highway 63.



Hispanic interviewees cited the Highway 63 corridor as particularly dangerous to pedestrians, despite this being a main thoroughfare for residents trying to reach essentials such as Fareway Grocery and the Toledo State Bank.



Mobility-challenged individuals would like a smooth, wide sidewalk that stretches from the new retirement center to the Toledo Business District, allowing for easier access to the various businesses such as Fareway Grocery, Hy-Vee, Dollar General, and Toledo State Bank.



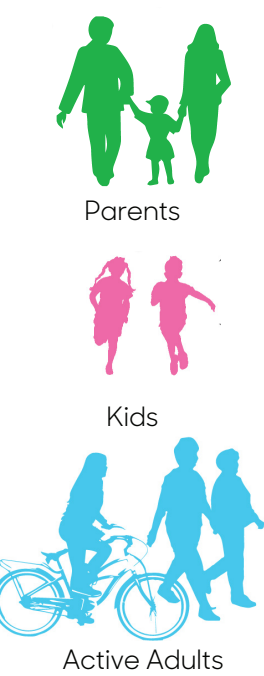
Local Hispanic residents enjoy Toledo Heights Park because the open spaces allow space for children to run around while parents can keep watching them. The paved drives and multiples types of sports fields offer plenty of variety and accessibility to visitors. However there is no continuous pedestrian route for elderly or mobility-challenged individuals, and the Toledo Heights Connection Plan hopes to address that.



Toledo Heights Park is a popular destination for both parents and their children due to the variety of sports fields and wide open spaces for children to run around while parents can keep an eye on them. However, despite being a popular pedestrian route according to the Toledo Walking Routes study, there is currently no paved connection for parents walking with their children. Pedestrians need to be cautious of speeding cars along Ross Street, and a wide multi-use trail would help to dramatically increase pedestrian and biker safety.

COMMUNITY ENGAGEMENT RESPONSE

“Better Pedestrian Connections”

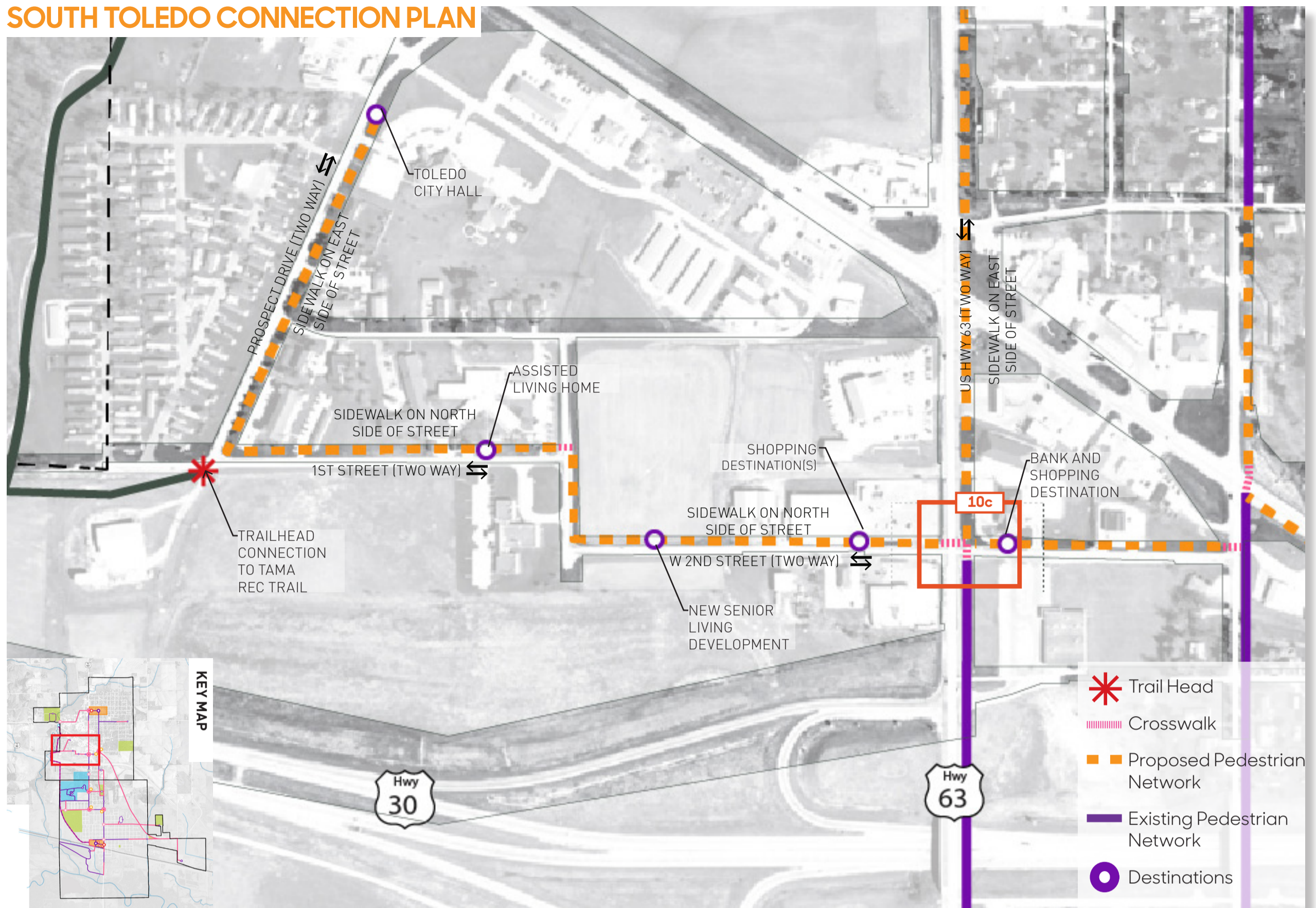


According to the Toledo Priorities, residents felt that better pedestrian connections was the third most important Transportation Enhancement Issue. Both connection plans provide safe crossing across through Toledo by providing crosswalks, slowing traffic, and shortening the distance for pedestrians to cross. These proposed paths will help to provide a more complete pedestrian network, and address the many comments and concerns from Tama and Toledo parents about the unsafe walking conditions for children trying to get to Toledo Heights Park.



Connection Plans

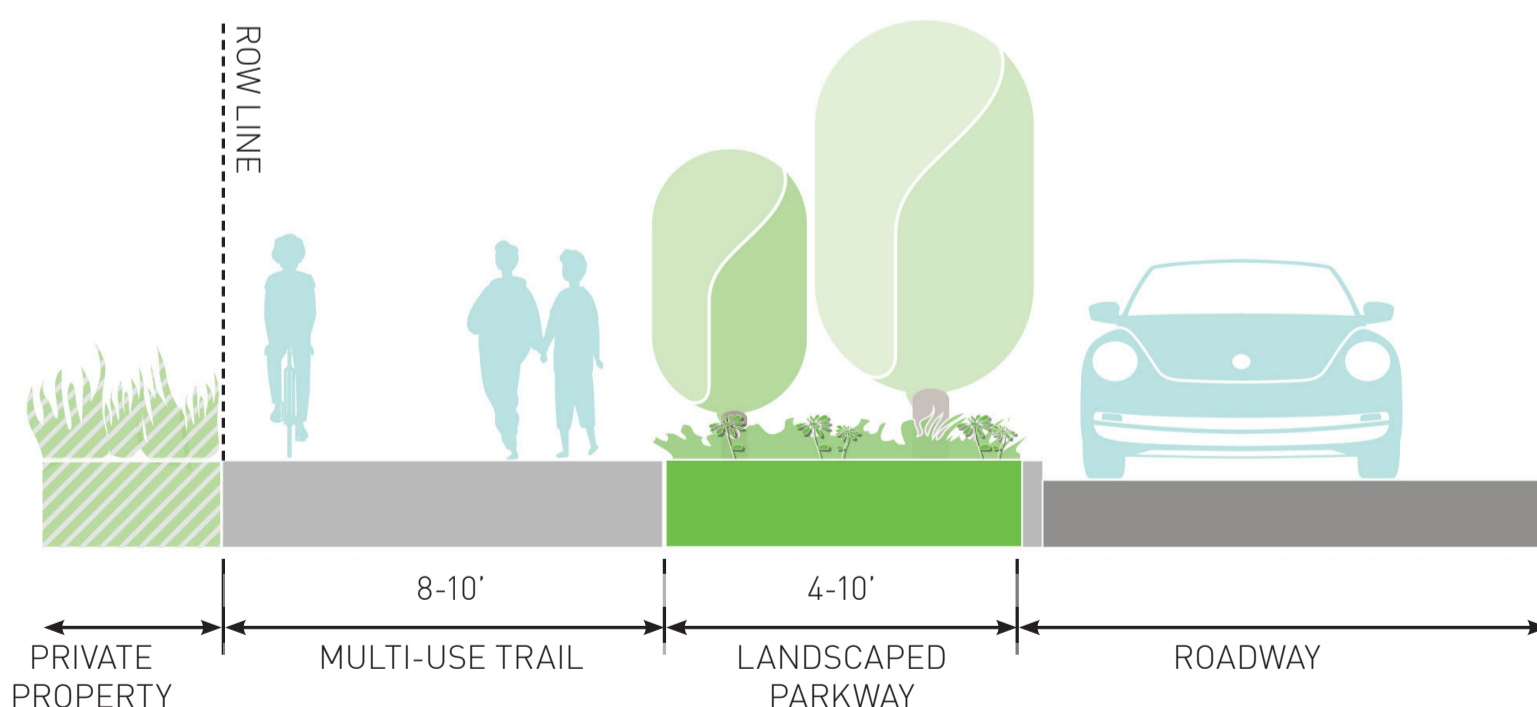
SOUTH TOLEDO CONNECTION PLAN



Description

The South Toledo Connection Plan extends the sidewalk network through the Toledo Business District and towards the neighborhoods and planned retirement homes that currently have no pedestrian access to essential businesses such as Medicap Pharmacy and Fareway Grocery. This plan also ties into the pedestrian corridor along US Highway 63. Mobility-challenged individuals such as residents of the new retirement center will have a smooth, paved route to access the Toledo Business District, and bikers will also have stronger, safer connections.

Cross-Section, Multi-use Trails



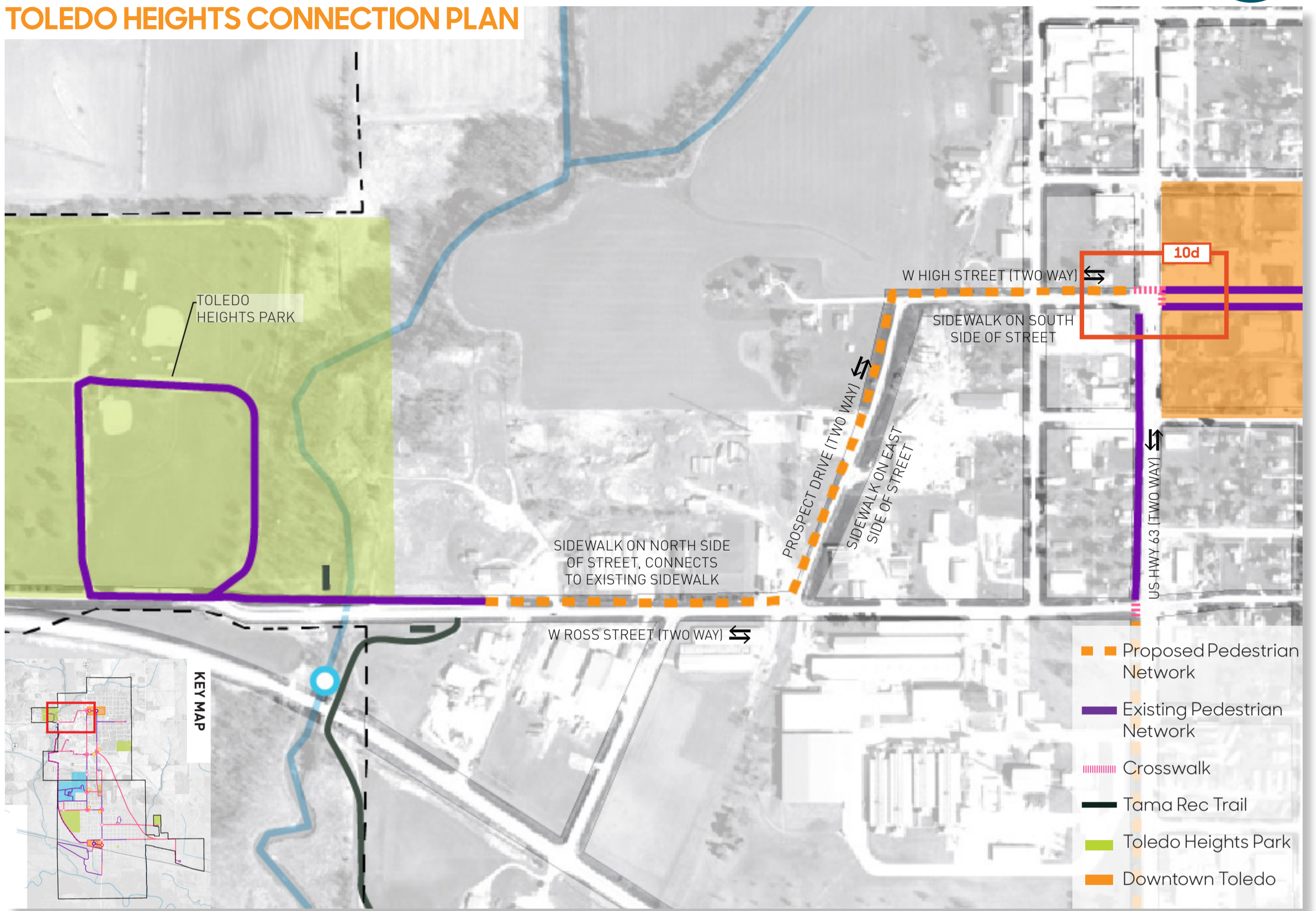
site design group

LA: Cassandra Rice, PLA, ASLA, Hana Ishikawa, AIA

Landscape Designer: Richard Meagher

Intern: Paul Hsu

TOLEDO HEIGHTS CONNECTION PLAN



Description

The Toledo Heights Connection Plan extends the sidewalk network through the Toledo Business District and towards the neighborhoods and planned retirement homes that currently have no pedestrian access to essential businesses such as Medicap Pharmacy and Fareway Grocery. This plan also ties into the pedestrian corridor along US Highway 63. Mobility-challenged individuals such as residents of the new retirement center will have a smooth, paved route to access the Toledo Business District, and bikers will also have stronger, safer connections.

Cross-Section, Multi-use Trails

