

COMMUNITY FEEDBACK



Steering Committee

The Toledo Steering Committee has asked to prioritize safer connections for both bikers and pedestrians crossing US Highway 63.



Mobility Challenged

Mobility-challenged individuals in Toledo would like a smooth, wide sidewalk that stretches from the new retirement center to the business district, creating easier access to essential businesses for this use group.



Hispanic Residents

Hispanic interviewees cited the Highway 63 corridor as particularly dangerous to pedestrians, despite this being a main thoroughfare for residents trying to reach essentials such as Fareway Grocery and the Toledo State Bank.

COMMUNITY ENGAGEMENT RESPONSE

"Heavy Traffic"



Steering Committee

The 2nd Street and Highway 63 intersection were identified by community members as a danger to cross on the Toledo Matrix due to vehicular speeding and lack of crosswalks, but also because the US Highway 63 trucking route travels through this crossing. The goal of both concepts is to slow down truck traffic without stopping it, addressing the concerns of Toledo officials that IDOT would re-route this traffic through another town.

"Better Pedestrian Connections"



Active Adults



Parents



Kids

According to the Toledo Priorities, residents felt that better pedestrian connections was the third most important Transportation Enhancement Issue. Both concepts provide safe crossing across both streets by providing crosswalks, slowing traffic, and shortening the distance for pedestrians to cross. The proposed sidewalks along US Highway 63 and 2nd Street that are a part of the South Toledo Connection Plan will help to provide a more complete pedestrian network for active adults, parents and their children.

"More Accessibility for Seniors"



Older Adults



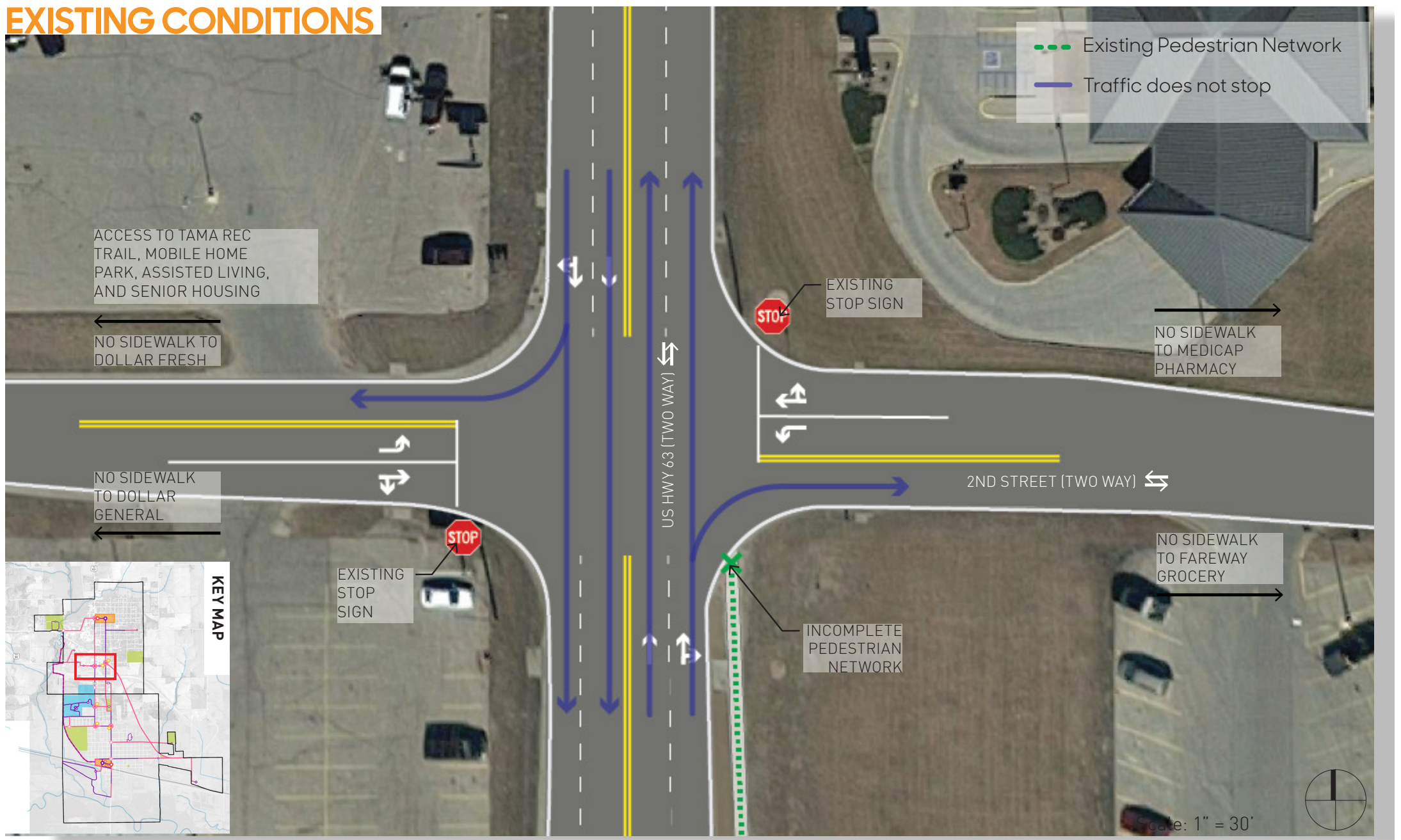
Mobility Challenged

The Toledo Priorities also identified lack of access for seniors and the mobility challenged as a Transportation Enhancement Issue, and the design concept for 2nd Street and US Highway 63 addresses this issue by providing ADA curb ramps with detectable warning strips at the end of all proposed crosswalks. Yield and stop signs are also proposed to slow incoming traffic and make drivers more aware of potential pedestrian presence, creating a safer crossing environment.

Toledo

2nd St + US 63

EXISTING CONDITIONS



Primary 2nd Street and US Highway 63 issues and opportunities include:

- Lack of sidewalk access to primary groceries and shopping hub.
- Main access point to grocery and shopping hub for mobile home park, assisted living facility, and senior homes. Limited pedestrian connections limit access to essential services and business for older residents.
- Access to Toledo City Hall.
- No way to safely cross US Highway 63 because traffic does not stop.
- No ADA ramp on the existing sidewalk.

EXISTING CONDITIONS:



site design group

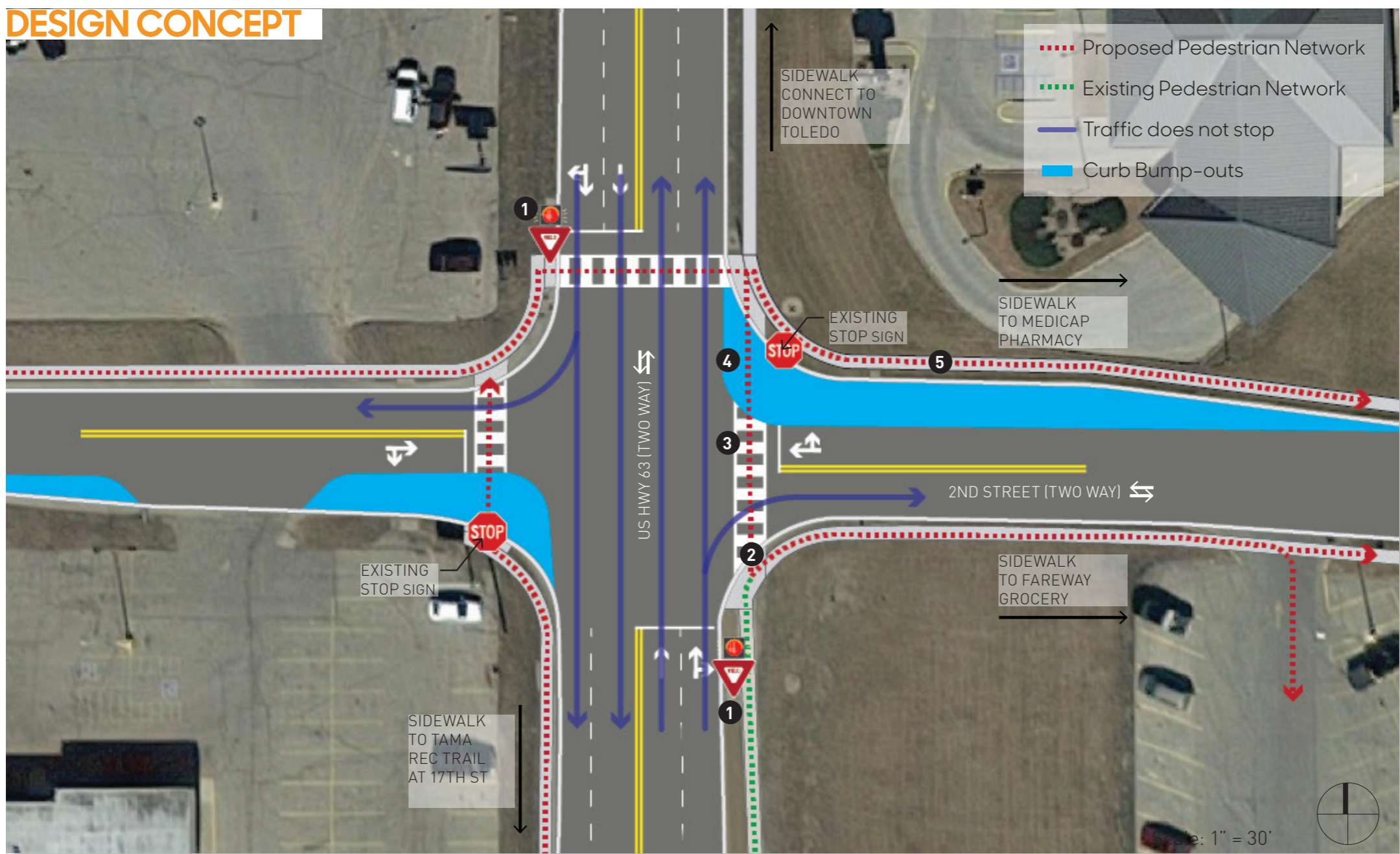
LA: Cassandra Rice, PLA, ASLA, Hana Ishikawa, AIA

Landscape Designer: Richard Meagher

Intern: Paul Hsu

Iowa State University | Trees Forever | Iowa Department of Transportation

DESIGN CONCEPT



LEGEND:

- ❶ Flashing Yield Sign - Slightly slows down US Highway 63 traffic, making drivers aware of potential pedestrians while not requiring a stop to continue onto Highway 63. Sign located on north and south for both directions of traffic.
- ❷ ADA Curb Ramp - Curb ramp with ADA detectable warnings.
- ❸ Crosswalk - Ladder style crosswalk at least 6' wide to prioritize and emphasize pedestrian crossings.
- ❹ Painted Curb Bump-out - Painted area on the existing street that shortens the distance pedestrians have to walk while crossing the street, increasing safety. Protected by flexible delineators.
- ❺ New Sidewalk - 6' wide (minimum) concrete sidewalk connection.

