

COMMUNITY FEEDBACK



Steering Committee

The Toledo Steering Committee has asked to Enhance Downtown Streetscapes, and try to bring both visitors and residents to downtown Toledo.



Mobility Challenged

Mobility-challenged people in Toledo said that the streetscapes in downtown are difficult to traverse due to lack of curb cuts or ADA accessibility.

COMMUNITY ENGAGEMENT RESPONSE

"Heavy Traffic"



Steering Committee

The Harding Street and Highway 63 intersection were identified by community members as a danger to cross on the Tama Matrix due to vehicular speeding and lack of crosswalks, but also because the US Highway 63 trucking route travels through this crossing. The goal of both concepts is to slow down truck traffic without stopping it, addressing the concerns of Tama officials that IDOT would re-route this traffic through another town.

"Better Pedestrian Connections"



Active Adults



Parents



Kids

According to the Toledo Priorities, residents felt that better pedestrian connections was the third most important Transportation Enhancement Issue. Both concepts provide safe crossing across both streets by providing crosswalks, slowing traffic, and shortening the distance for pedestrians to cross. The proposed sidewalks along US Highway 63 and High Street will help to provide a more complete pedestrian network, satisfying the priorities identified by Toledo community members including Better Pedestrian Connections and Better Downtown Streetscapes.

"More Accessibility for Seniors"



Older Adults



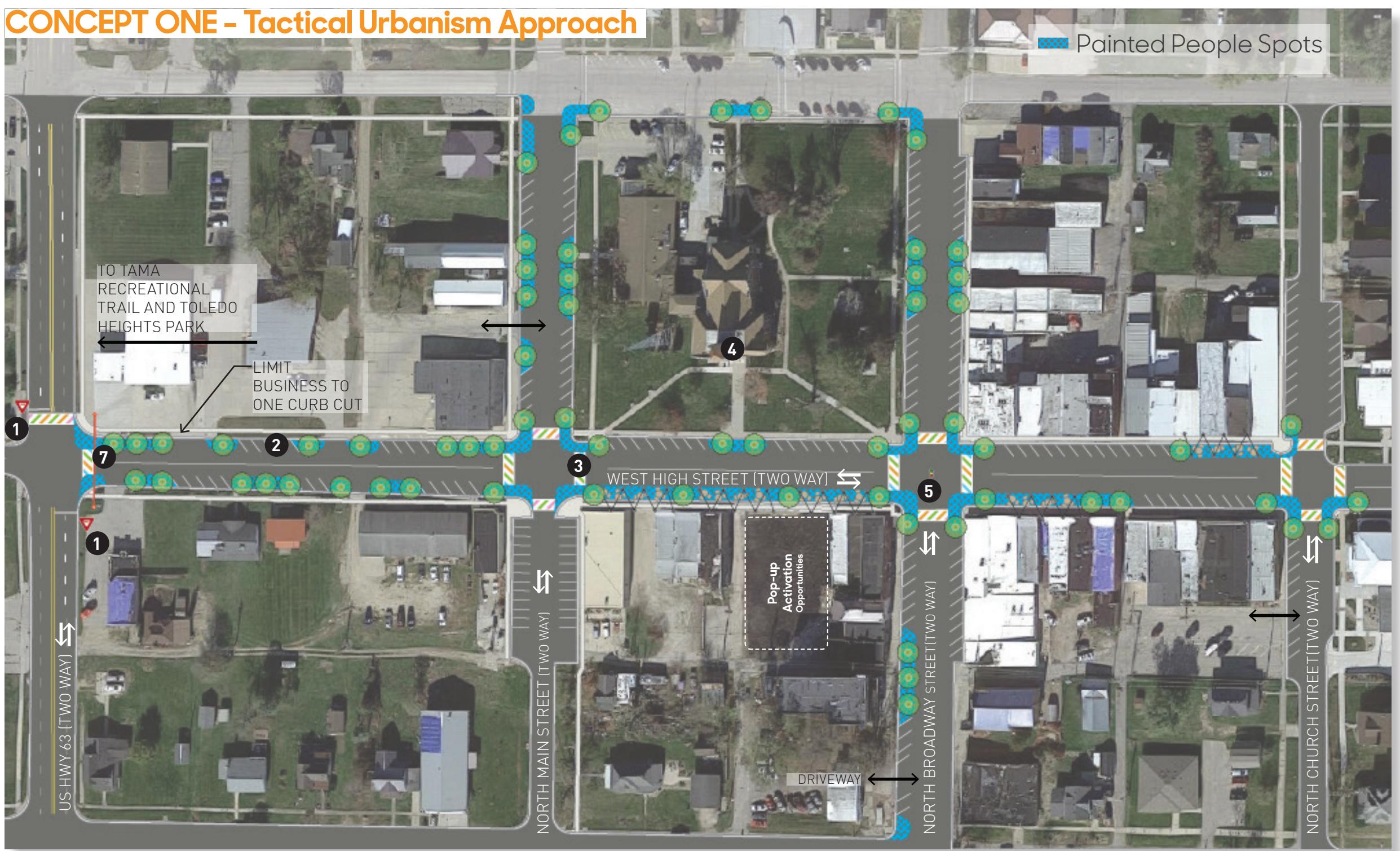
Mobility Challenged

The Toledo Priorities also identified lack of access for seniors and the mobility challenged as a Transportation Enhancement Issue, and both concepts for Downtown Toledo address this issue by providing ADA curb ramps with detectable warning strips at the end of all proposed crosswalks. Yield and stop signs are also proposed to slow incoming traffic and make drivers more aware of potential pedestrian presence, creating a safer crossing environment.

Toledo

Downtown Toledo

CONCEPT ONE - Tactical Urbanism Approach



LEGEND:

- ① Yield Sign
- ② Downtown Toledo Entry Gateway
- ③ "People Spots" - replacement of parking spaces with outdoor dining, parklets, play pockets, dog parks, and other pedestrian-focused amenities that activate and enhance the public realm.
- ④ Enhanced Crosswalk
- ⑤ Tama County Courthouse
- ⑥ Historic Stop Light
- ⑦ Overhead Downtown Identifier



site design group

LA: Cassandra Rice, PLA, ASLA, Hana Ishikawa, AIA

Landscape Designer: Richard Meagher

Intern: Paul Hsu

CONCEPT TWO - Enhanced Connections & Permanent Streetscape



LEGEND:

- 1 Downtown Toledo Entry Gateway
- 2 "People Spots" - replacement of parking spaces with outdoor dining, parklets, play pockets, dog parks, and other pedestrian-focused amenities that activate and enhance the public realm.
- 3 Enhanced Crosswalks - 6' wide crosswalks with specialty pavement designs
- 4 Constructed Curb Extension- potential for outdoor dining spaces, seating, public art, and other public realm improvements
- 5 Enhanced Street Trees
- 6 Tama County Courthouse
- 7 Historic Stop Light

